



**Combi-steam oven 200 series**  
**Full glass door in Gaggenau Silver**  
**Width 60 cm**  
**controls at the top**

**Flush installation**  
**Water tank for fresh and waste water**  
**Large cavity**  
**LED light source**  
**External steam generation**  
**Steaming without pressure**  
**Hot air 30 °C to 230 °C can be combined with chosen humidity level of 0%, 30%, 60%, 80% or 100%**  
**Sous-vide cooking with accurate temperature regulation**  
**Automatic programmes**  
**Core temperature probe with estimation of cooking time**  
**TFT touch display**  
**Panel-free appliance with surface control module**  
**Electronic temperature control from 30 °C to 230 °C**  
**50 litres net volume**

**Heating methods**  
 Hot air + 100 % humidity. Hot air + 80 % humidity. Hot air + 60 % humidity. Hot air + 30 % humidity. Hot air + 0 % humidity. Low temperature cooking. Sous-vide cooking. Full surface grill level 1 + humidity. Full surface grill level 2 + humidity. Full surface grill + circulated air. Dough proofing. Defrosting. Regenerating.

**Handling**  
 Rotary knob and TFT touch display operation.  
 Clear text display.  
 Option to save individual recipes (incl. core temperature probe).  
 Personalisation of automatic programmes.  
 Information key with use indications.  
 Side-opening door opens up to 110° angle.

**Features**  
 2 removable 1.7 litre water tanks.  
 Water level warning.  
 Three-point core temperature probe with automatic shut-off and estimation of cooking time.  
 Automatic programmes.  
 Actual temperature display.  
 Timer functions: cooking time, cooking time end, timer, stopwatch, long-term timer.  
 Automatic boiling point detection.  
 LED light on the side.  
 Hygienic stainless steel cooking interior.  
 4 tray levels.  
 Home network integration for digital services (Home Connect) either via cable connection LAN (recommended) or wireless via WiFi.  
 The availability of the Home Connect functionality depends on the availability of the Home Connect Services in your country. Home Connect Services are not available in every country – for further information please check: [www.home-connect.com](http://www.home-connect.com)

**Safety**  
 Child lock.  
 Safety shut-off.  
 Cooled housing with temperature protection.

**Cleaning**  
 Cleaning aid.

**Characteristics**  
**Color / Material Front**  
**Construction type**  
 Built-in  
**Door opening**  
 Lateral  
**Required niche size for installation (HxWxD)**  
 450-450 x 560-560 x 550  
**Dimensions of the product (mm)**  
 455 x 590 x 540  
**Dimensions of the packed product (HxWxD) (mm)**  
 585 x 825 x 695  
**Control Panel Material**  
**Door Material**  
 Glass  
**Net weight (kg)**  
 45.704  
**Approval certificates**  
 Australia Standards, CCC, CE, China, China ROHS 20, Eurasian, G-Mark, Ukraine, VDE  
**Length of electrical supply cord (cm)**  
 150  
**EAN code**  
 4242006278175

**Consumption and connection features**  
**Electrical connection rating (W)**  
**Current (A)**  
 16  
**Voltage (V)**  
 220-240  
**Frequency (Hz)**  
 50  
**Plug type**  
 Gardy plug w/ earthing  
**Approval certificates**  
 Australia Standards, CCC, CE, China, China ROHS 20, Eurasian, G-Mark, Ukraine, VDE  
**Number of cavities (2010/30/EC)**  
 1  
**Usable volume (of cavity) - NEW (2010/30/EC)**  
 50  
**Energy efficiency class (2010/30/EC)**  
 A  
**Energy consumption per cycle conventional (2010/30/EC)**  
**Energy consumption gas oven per cycle conventional (2010/30/EC)**  
**Energy consumption per cycle forced air convection (2010/30/EC)**  
 0.72  
**Energy consumption gas oven per cycle forced air convection (2010/30/EC)**  
**Energy efficiency index (2010/30/EC)**  
 94.7

created on 2020-03-10  
 Page 1

Descaling programme for the steam generator.  
 Drying function.  
 Water tank, dishwasher-safe.  
 Grease filter, dishwasher-safe.  
 Strainer filter, removable.

**Planning notes**  
 Door hinge not reversible.  
 No other electrical appliances should be installed above the BS.  
 The door panel surface of the appliance extends 21 mm from the furniture cavity.  
 The outer edge of the door handle extends 72 mm from the furniture cavity.  
 Necessary lateral gap between appliance door and furniture panel of min. 5 mm.  
 Consider the overhang, incl. the door handle, when planning to open drawers next to the appliance.  
 When planning a corner solution, pay attention to the 110° door opening angle.  
 The main socket needs to be planned outside of the niche.  
 The LAN port can be found at the back on the lower left side.

**Connection**  
 Energy efficiency class A at a range of energy efficiency classes from A+++ to D.  
 Total connected load 3.1 KW.  
 Connecting cable 1.5 m with plug.  
 Plan a LAN cable.  
 Power consumption standby/display on 0.8 W.  
 Power consumption standby/display off 0.5 W.  
 Power consumption standby/network 1.8 W.  
 Time auto-standby/display on 20 min.  
 Time auto-standby/display off 20 min.#  
 Time auto-standby/network 20 min.  
 Please check the user manual for how to switch off the WiFi module.

**Color Variants**  
 BSP251131  
 Width 60 cm  
 controls at the top  
 BSP251101  
 Full glass door in Gaggenau Anthracite  
 Width 60 cm  
 BSP251111  
 Full glass door in Gaggenau Metallic  
 Width 60 cm

**Included accessories**  
 1 x grid.  
 1 x pluggable meat probe.  
 1 x STS tray.  
 punched.  
 40 mm deep.  
 1 x STS tray.  
 unpunched.

**Optional accessories**  
 GN010330  
 GN114130  
 Gastronorm insert, stainless steel, GN 1/3  
 GN114230  
 Gastronorm insert, stainless steel, GN 2/3  
 GN124130  
 Gastronorm insert, stainless steel, GN 1/3  
 GN124230  
 Gastronorm insert, stainless steel, GN 2/3  
 GN340230  
 Gastronorm roaster in cast aluminium

**Product Variants**  
 BSP250131  
 Combi-steam oven 200 series  
 Full glass door in Gaggenau Silver  
 Width 60 cm  
 controls at the top

Combi-steam oven 200 series

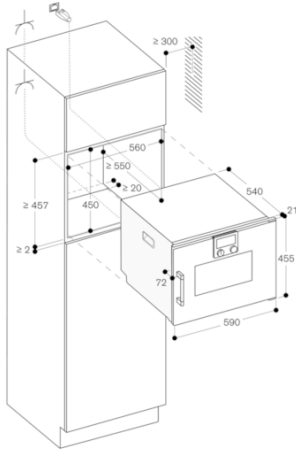
Full glass door in Gaggenau Silver

Width 60 cm

controls at the top

created on 2020-03-10

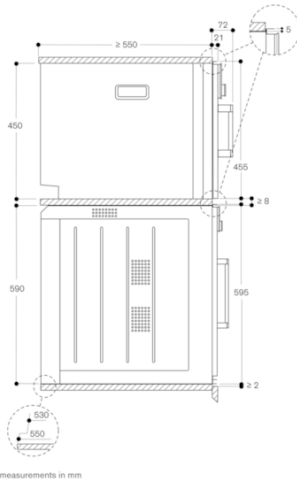
Page 2



Socket

measurements in mm

Side view of BSP 220/250 above BOP



measurements in mm

**GAGGENAU**