



BMP225100
Microwave oven 200 series
Full glass door in Gaggenau Anthracite
Width 60 cm
Left-hinged
Controls at the bottom

Flush installation
Handleless door / automatic door opening
Single operation and combination of microwave and grill
Sequential operation of up to 5 modes incl. programming of combined operation and rest time
TFT touch display
Electronic temperature control
Interior volume 21 litres

Programmes

Microwave operation with 5 output levels: 900, 600, 360, 180, 90 W.
Full surface grill with 3 levels of intensity, maximum output 1300 W.
Full surface grill with microwave output levels 360, 180 and 90 W combinable.
10 automatic programmes with weight indication:
3 defrosting programmes
4 cooking programmes
3 combination programmes
Option to save individual recipes.

Handling

Automatic door opening.
Rotary knob and TFT touch display operation.
Clear text display in 25 languages.
Information key with use indications.
Side-opening door opens up to 110° angle.

Features

Innowave.
Actual temperature display.
25 W interior light.
Hygienic stainless steel interior with glass ceramic base.

Safety

Thermally insulated door with double glazing.
Triple door lock.
Child lock.
Safety shut-off.
Cooled housing with temperature protection.

Planning notes

Door hinge not reversible.
Minimum installation height 85 cm (top edge of niche bottom).
Height-adjustable feet.
Installation of BMP above BOP with intermediate shelf.
Necessary lateral gap between appliance door and furniture panel of min. 5 mm.
When planning a corner solution, pay attention to the 90° door opening angle.

Connection

Total connected load 2.0 kW.
Connection cable 1.7 m, pluggable.

Characteristics

Type of micro-wave oven
MW+Grill function

Type of control
Electronic

Color / Material Front
Anthracite

Dimensions of the product (mm)
382 x 590 x 321

Cavity dimensions (mm)
220 x 350 x 270

Length of electrical supply cord (cm)
170

Net weight (kg)
18.905

Gross weight (kg)
21.6

EAN code
4242006218485

Consumption and connection features

Maximum micro-wave power (W)
900

Power of the booster function (W)

Connection rating (W)
1990

Current (A)
10

Voltage (V)
220-240

Frequency (Hz)
60; 50

Plug type
Gardy plug w/ earthing

created on 2020-03-31

Page 1

Color Variants

BMP225100
Full glass door in Gaggenau Anthracite
Width 60 cm
BMP225110
Full glass door in Gaggenau Metallic
Width 60 cm
BMP225130
Full glass door in Gaggenau Silver
Width 60 cm

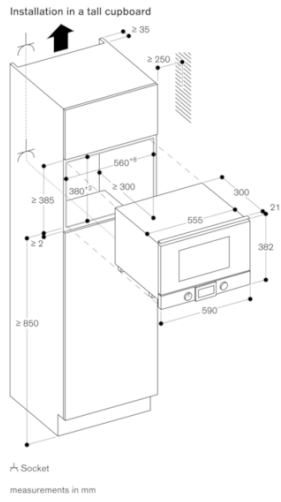
Included accessories

1 x glass pan.
1 x grid.

Product Variants

BMP224100
Microwave oven 200 series
Full glass door in Gaggenau Anthracite
Width 60 cm
Right-hinged
Controls at the bottom

BMP225100
Microwave oven 200 series
Full glass door in Gaggenau Anthracite
Width 60 cm
Left-hinged
Controls at the bottom
created on 2020-03-31
Page 2



Side view of BMP 224/225 over BOP

